



The Arc Foundation of Somerset County Impact Report Fiscal Year 2015-2016-2017

*Enhancing Quality of Life
Expansion of Programs
Supporting Community Awareness*



The Arc Foundation of Somerset County is dedicated to enhancing the quality of life and expanding programs and services for individuals with intellectual and developmental disabilities through the procurement of grants, fundraising, awareness, education, and public relations activities.

Dear Friends,

Looking back on the last few years, there are so many events that remind us of the struggles our fellow Americans are dealing with every day. Likewise, when we come together and drive for change – the results are overwhelming.

On behalf of The Arc Foundation of Somerset County Board of Trustees, I want to take this opportunity to thank you for all that each of you have done and do every day in support of others!

Specifically, thank you for your spirit of caring which was evident in your support of the various fund raising efforts that The Arc Foundation of Somerset County put forth during the past few years. Your generosity had a direct impact on the children, adolescents and adults with intellectual and developmental disabilities that we serve every day.

The vision of The Arc Foundation of Somerset County is to ensure the financial viability of The Arc of Somerset County's programs which support lifetime achievement and success of each of the individuals served. It is also dedicated to enhancing the quality of life and expanding programs and services for individuals with intellectual and developmental disabilities. This is only achieved through the procurement of grants, fundraising, awareness, education, and public relations activities.

In the last two years, your support enabled us to initiate several new and innovative programs, as well as help families seeking services through day care and camp scholarships. In addition, we witnessed a very successful kick off to our Camp Jotoni Capital Campaign. Equally as important as your philanthropy, your volunteer efforts allowed for significant improvements to many of the living and work environments throughout our agency. These improvements enabled us to enhance the support we provide as well as promoting the achievements for those we serve.

Each of you is an integral part of The Arc Foundation of Somerset County's success story as illustrated in the very first IMPACT REPORT, which covers the past three fiscal years. We thank you for embracing the concept that each and every person living with intellectual and developmental disabilities is entitled to achieve success. Similarly, every one of those individuals will have the opportunity to live and participate in the community regardless of the level of their abilities.

The summer time always marks the beginning of a season in which we enjoy family, friends, and all that we can do outdoors as healthy and active individuals, as well as a time we reflect on what we can do to make others enjoy the opportunities we experience. As I look back on the past year, there is so much to be grateful for every day. We live in a great country with an assurance of peace, freedom and opportunity. Each of us also has the unique opportunity to make a difference for the betterment of our fellow Americans, and in the lives of those less fortunate than ourselves. It is a privilege to be a part of these efforts, and I am thankful to all of you for your dedication and efforts these past few years, as well as moving forward.

As member of our "family of supporters" we thank you for your partnership and encourage you to continue to give towards our family – together we can achieve even more!

Warmest Regards,



Scott Ritter, President
Board of Trustees



*"As we express our gratitude,
we must never forget that the highest
appreciation is not to utter words,
but to live by them."*

-John F. Kennedy



Foundation of Somerset County

The Arc Foundation of Somerset County's **FY 2015, 2016 and 2017 revenue** is defined below as income from individual donations, corporate donations which include matching gifts and employee giving contributions, donations from the Camp Jotoni Capital Campaign, fundraising from two major events per year, as well as dividends, investments and restricted income from private grants written for The Arc of Somerset County programs.

Revenues	Total	Expenses	Total
Individual Donations	\$ 59,040	Management	\$361,976
Corporate Donations	\$108,538	Capital Campaign	\$ 56,338
Capital Campaign	\$124,150	Restricted	\$178,537
Restricted*	\$206,498	Fundraising	\$120,469
Dividends and Other Income	\$ 27,661	Balance	\$717,320
Fundraising	\$370,157	*As of 5/31/17	\$178,724
	\$896,044		

** Note: The Arc Foundation of Somerset County's Fiscal Year 2015, 2016, 2017 Management expenses include Public Relations, Volunteer Management, Community Outreach and Education, Annual Meeting, Family and Public Meetings, Planned Giving programs and Newsletter production.*



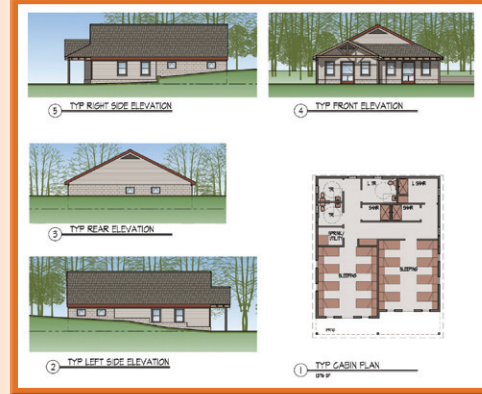
Fundraisers like the Step Up Walk each June and Arc Angel Gala each November help us raise funds for various programs and services.



Donations from both the corporate and local community allow us to fulfill needs that may not be met by state and municipal funding.

The Arc Foundation of Somerset County assisted with fundraising, public relation activities and grant writing for various programs.

- 132 children received respite services through “Kids Night Out”
- Over 100 children benefited from new supplies for The Jerry Davis Center for Children and Families.
- 30 families received private grant subsidy funding to attend the Developmental Daycare and Preschool.
- 25 campers attended the Camp Jotoni respite programs via scholarships.
- \$124,150 was raised toward the Camp Jotoni Capital Campaign.
- Over 210 adults received enhanced recreational programs.
- 98 adults living in group homes received over 10,000 hours of volunteer services that helped with beautification and enhancements.
- Over 1,500 volunteers were coordinated by The Arc Foundation of Somerset County that helped with interior and exterior improvements at our adult day programs and children’s programs including Camp Jotoni.
- Three new program expansions took place at our Adult Training Centers with art, music and computer classes.



For 40 years, Camp Jotoni has provided a unique and exciting camp experience for special needs children and adults in Somerset County and the surrounding areas. Moving forward, we plan to expand our camp services and renovate our facilities to ensure we continue to meet the needs of those we serve. The Camp Jotoni Capital Campaign will continue to raise significant funding to help us achieve those goals in the next 5 years.

Encouraging Corporate and Community Awareness Through Volunteering

Since 2014, The Arc Foundation of Somerset County increased awareness for the need of upgrades and renovation for our residential facilities, day program and Camp Jotoni facilities through corporate and community volunteering.

- In FY 2015, 2016, 2017 over \$500,000 of both man power and materials were volunteered and donated to The Arc of Somerset County programs for renovation and upgrades.
- In FY 2015, 2016, 2017 10 groups of corporate and community volunteers dedicated their time as companions to our consumers making crafts, celebrating holiday's and spending quality time.

"Group volunteer efforts permit our staff to focus all their time on providing quality programs and services to individuals we serve".

Lauren Frary, Executive Director for The Arc of Somerset County



The common thread in all of our successes is people. We are inspired by the tenacity and determination of those we serve and their families; our employees are leaders in their area of expertise and show commitment and compassion in everything they do; and our **volunteers** are the cornerstone of all that we accomplish. It is these principles that created the foundation of our agency and they will continue to carry us for years to come.



Foundation Board of Trustees

President:	Scott Ritter
Vice President:	Brian Bosenberg
Treasurer:	Jonedel Pangan
Secretary:	Eric Mandelbaum
Executive Director:	Lauren Frary
Member:	Michelle McMahon

The Arc Foundation of Somerset County

Director of Foundation: Lisa Marie Arieno
Development Coordinator: Laura Ziegler

Office Address: 45 Route 202 South, Suite 101
P.O. Box 903, Far Hills, NJ 07931
Phone: 908-658-3805
Fax: 908-658-3856

E-mail address: lisamariae@thearcofsomerset.org
www.thearcofsomerset.org